

This Brief is Classified **UNCLASSIFIED**

National Special Security Events (NSSE)



**Mario Carrillo, USNORTHCOM
Jean Lumley, FBI Miami
Bill Lowry, Dolphin Stadium**

4 March 2008



UNCLASSIFIED



UNCLASSIFIED

Agenda

- **National Special Security Event (NSSE) Information**
 - Defined
 - Designation
- **Special Event Homeland Security (SEHS) Levels**
- **NSSEs Primary Agencies (PAs)**
- **Joint Field Office (JFO) Information & Organization**
- **United States Secret Service (USSS) Subcommittees**
- **FBI Support to NSSEs**
- **Venue Support to NSSEs**
- **Military Support to NSSEs**
- **Conclusion**

UNCLASSIFIED



National Response Plan



National Response Plan

November 2004

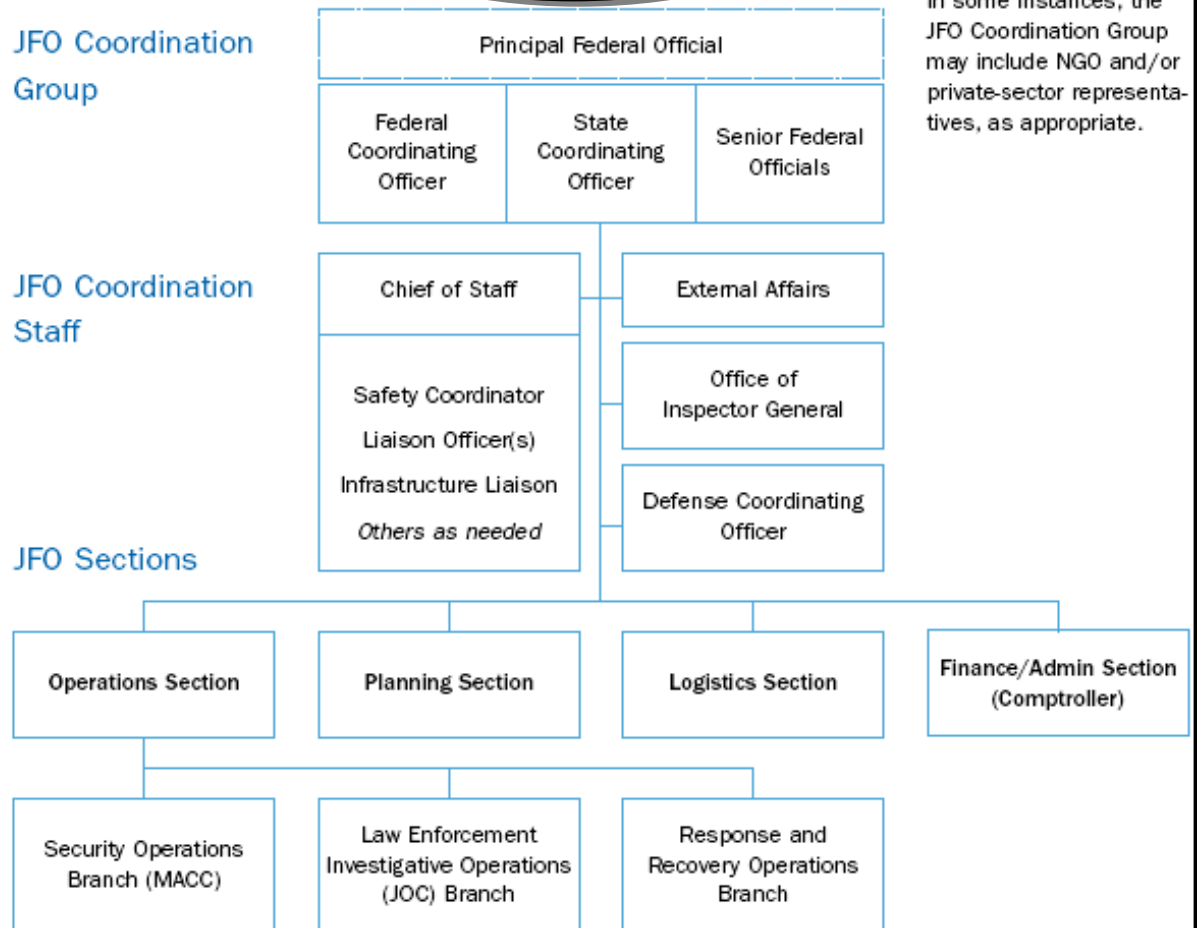


National Response Framework

January 2008



FIGURE 9. Sample JFO organization for National Special Security Events





UNCLASSIFIED

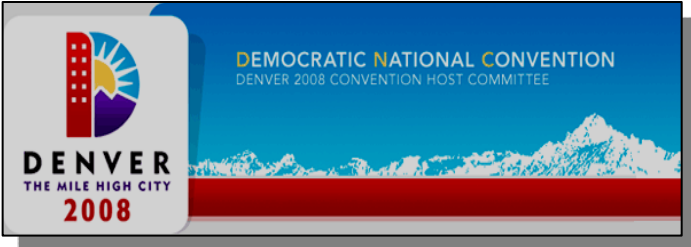
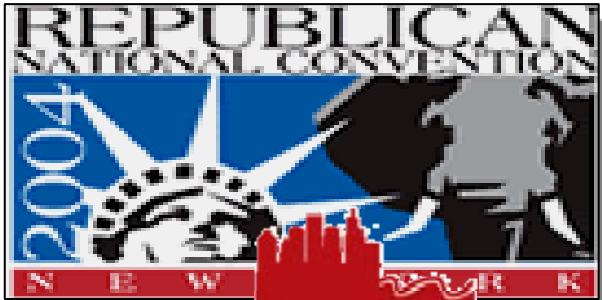
What is a Special Event?

A significant domestic or international event, occurrence, contest, activity, or meeting which by virtue of its profile and/or status represents an attractive target for terrorist attack.



UNCLASSIFIED

NSSE Defined

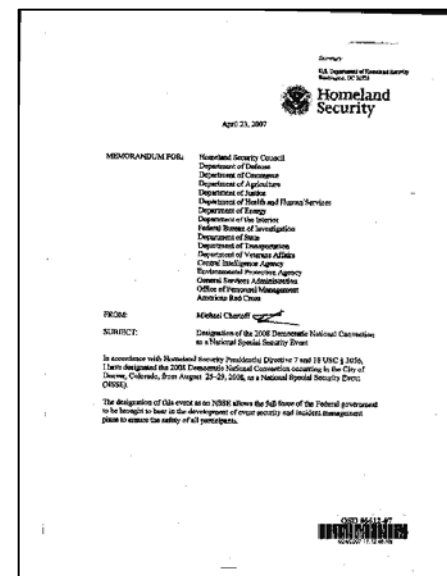
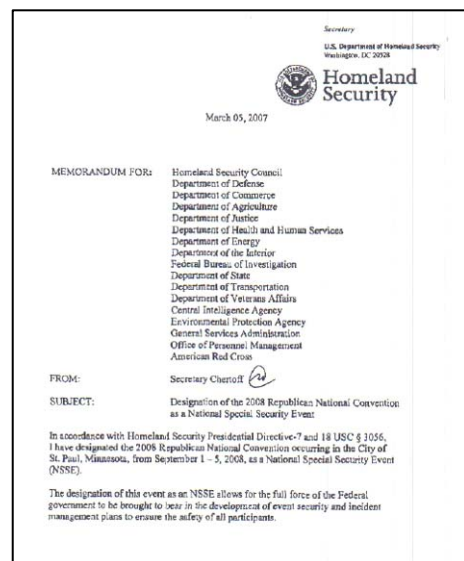


Events of national significance which by virtue of their political, economic, social, or religious significance may be targets of terrorism or other criminal activity. Events include presidential inaugurations, major international summits held in the United States, major sporting events, and presidential nominating conventions.



NSSE Designation

- Governor submits request to Secretary of the Department of Homeland Security (DHS)
- Under Homeland Security Presidential Directive 7 (HSPD-7), Secretary, DHS the will make the final determination to designate an event as an NSSE





Key Homeland Security Personnel

- **Principal Federal Official (PFO):** appointed by the Secretary of DHS, to facilitate interagency incident management coordination during the planning and execution of an NSSE.
- **oversee, coordinate, and execute the Secretary’s incident management responsibilities for incidents requiring a coordinated Federal Response.**

- **Federal Coordinator (FC):** Individual assigned as the primary, but not exclusive, Federal point of contact for event planning to locally coordinate Federal activities for SEHS Level 1 and 2 events.





Special Event Assessment Rating (SEAR)

- **The FBI's increased involvement in providing counterterrorism (CT) support at special events requires an objective, risk-based method that is both repeatable and defensible, for determining the appropriate level of US Government support.**
- **Department of Homeland Security (DHS) and the FBI compile a prioritized list of Special Events, each year based on input from federal, state and local law enforcement entities.**
- **The SEAR System attempts to quantify several threat, vulnerability, and risk factors for each event to determine the event's potential attractiveness as a terrorist target.**
- **Each event is assigned a SEAR I through V rating, with I having the greatest potential to be targeted. (SUPER BOWL XLII)**



Special Event Assessment Rating (SEAR)

Event	Staffing	Remarks
NSSE	PFO	Inauguration, political conventions, G-8 Summit, Reagan Funeral
SEAR 1	FC	UN General Assembly, Super Bowl
SEAR 2	FC	Marine Corps Marathon
SEAR 3	Limited	Indianapolis 500 Race
SEAR 4	By request	NFL Season
SEAR 5	NA	



NSSE Primary Agencies (PA)

As Directed by NSPD-46/HSPD15



- **U.S. Secret Service (USSS)** is the lead agency for security design, planning and implementation



- **Federal Bureau of Investigation (FBI)** is the lead agency for intelligence, counterterrorism and federal criminal violations



- **Federal Emergency Management Agency (FEMA)** is the lead agency for Emergency Management, (consequence management)



UNCLASSIFIED

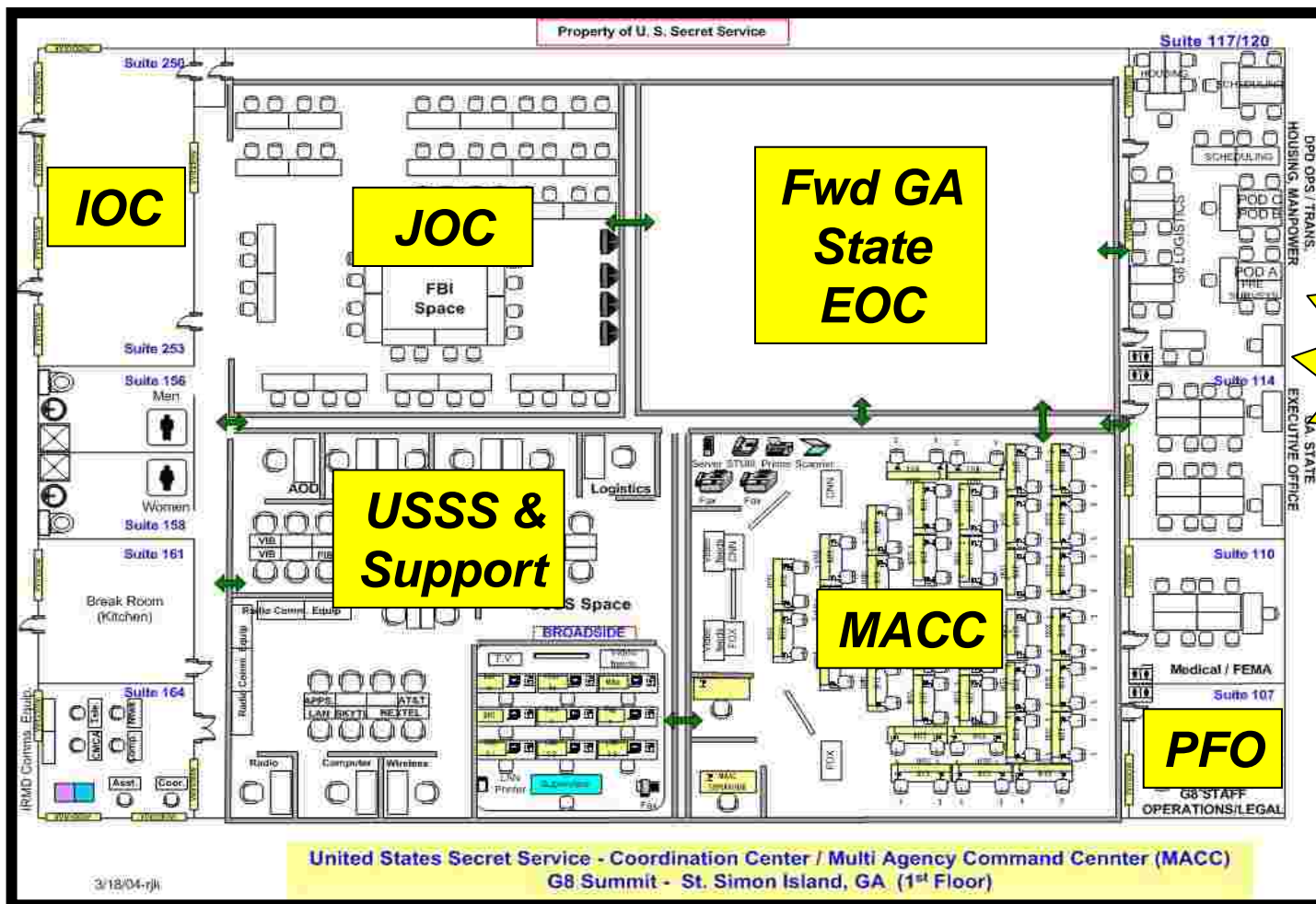
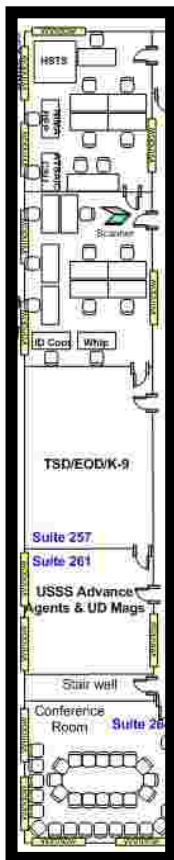
JFO

- **Joint Field Office (JFO)** is a temporary Federal facility established for NSSE's to provide Federal, State, local, and tribal agencies to effectively coordinate protection, prevention, preparedness, response, and recovery actions
- The JFO operational centers include:
 - PFO Coordination Cell
 - Multi-Agency Command Center (MACC)
 - Intelligence Operations Center (IOC)-responsibility: FBI
 - Joint Operations Center (JOC)-responsibility: FBI
 - Air Security Operations Center (ASOC)
 - Joint Information Center (JIC)
 - USSC Ops/spt area (Broadband)
 - Forward State Operation Center (previous NSSEs)



UNCLASSIFIED

2004 USSS G8 Summit JFO Layout



JIC

UNCLASSIFIED



2008 DNC NSSE Subcommittees

- **Airspace Security**
- **Civil Disturbance/Prisoner Processing**
- **Critical Infrastructure Protection**
- **Consequence Management**
- **Credentialing**
- **Crisis Management**
- **Dignitary/VIP Protection**
- **Explosive Device Mitigation**
- **Fire/Life Safety/HAZMAT**
- **Intelligence & Counter Terrorism**
- **Interagency Communication**
- **Legal**
- **Public Affairs**
- **Tactical/Counter Surveillance**
- **Training**
- **Transportation/Traffic**
- **Venue Security**

**Subcommittees
Co-chaired by USSS
and
Denver Police
Department**

***Executive
Committee***



Federal Bureau of Investigation support to NSSEs

**SA Jean M. Lumley
Special Events Coordinator
FBI Miami Division**



FBI Resources



FBI can provide the following resources for Special Events:

- Crisis Management
- Crisis Negotiations
- Communications
- WMD/HAZMAT
- Maritime/USERT
- Intelligence
- Legal
- Media
- Joint Operations Center (JOC) setup and Intelligence Operations Center (IOC)
- SWAT
- EOD
- Aviation
- Evidence Response
- Ops Med
- Investigative
- Technical



DOD Support



- **Department of Defense support for Sporting events:**
 - **DOD support for civilian sporting events is limited to the areas of SAFETY and SECURITY.**
 - **AG must certify DOD support is necessary to meet essential security and safety needs.**
 - **Type of support:**
 - **Aviation, EOD, WMD, Communications, Logistics, Security, Engineering, Transportation, and Tactical Equipment**



DOD Support Con.



- **DOD Support for Other Special Events:**
 - **DOD supports the FBI and other lead federal agencies in a number of non-sporting events, such as the Presidential Inaugurations, political conventions, and large scale meetings of heads of state in the United States. AG certification is not needed for these types of events, however the FBI field office needing DOD crisis management assistance must coordinate at the Headquarters level.**



Questions



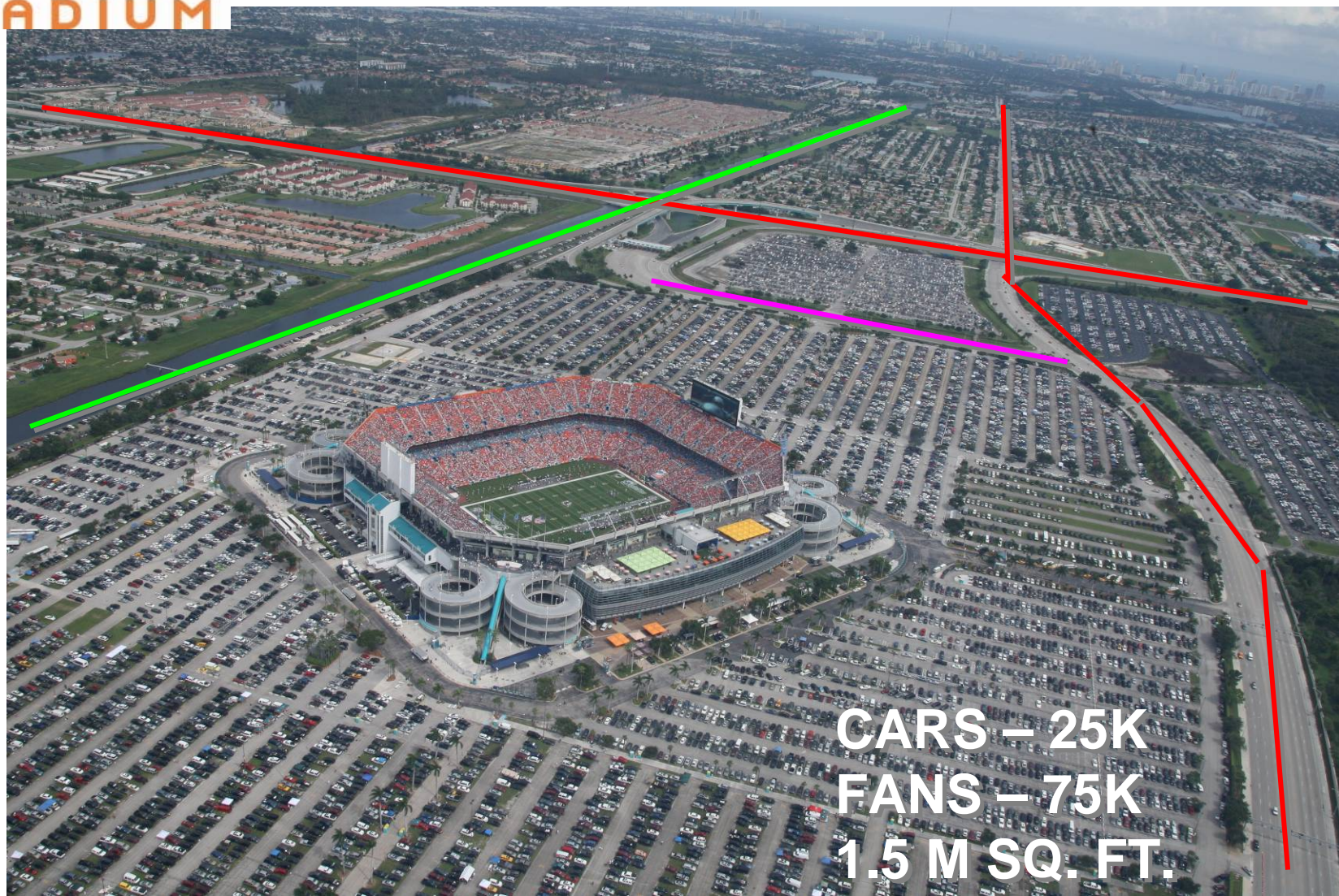
Venue Support to NSSE's

**Bill Lowry
Dolphin Stadium**



UNCLASSIFIED

SPORTS VENUE OR TARGET?



CARS – 25K
FANS – 75K
1.5 M SQ. FT.

UNCLASSIFIED



UNCLASSIFIED

WHO/WHERE IS THE THREAT?



UNCLASSIFIED



UNCLASSIFIED

C3I – VENUE PARTICIPATION

- **Command, Control, Communications, Intelligence**
- **Venues can supply architectural data – electrical, structural, HVAC, CCTV, access control**
- **Participate in all pre-planning activities**
- **Onsite Command Post**
- **Communications – verbal, written, electronic**
- **Intelligence – building, personnel, circumstances “out of the norm”**
- **Training opportunities – 34 practical exercises for 2007 Super Bowl at Dolphin Stadium**

UNCLASSIFIED



UNCLASSIFIED



QUESTIONS

UNCLASSIFIED

This Brief is Classified **UNCLASSIFIED**

Military Support to NSSE's



**Mario Carrillo
USNORTHCOM**

UNCLASSIFIED



General NSSE Information

- **NSSE security is planned, exercised, and implemented through a unified command model**
- **Representatives consist of participating federal, state, and local agencies with NSSE responsibilities**
- **Agency/organizations are tasked according to their expertise or jurisdictional responsibility**
- **Congress does appropriate funding, however not all costs are covered by this appropriation**

“with the support of hundreds of federal, state, and local law enforcement and public safety organizations, each of these events has successfully concluded without any major incidents.”



Identifying Military Force Requirements (DNC)

SUBCOMMITTEES

- USSS
- DNC Committee
- City of Denver
- Colorado
- other local, State, Federal agencies

Determine Requirements

Requirements satisfied IAW NIMS

- Local
- State
- Federal



Validated Civil Requirements

- DoD (Title 10) support obtained via RFA/RFF Process
- Title 32 Process-State determined

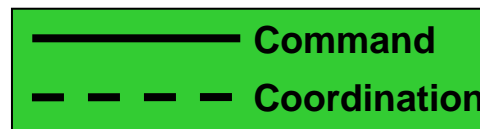
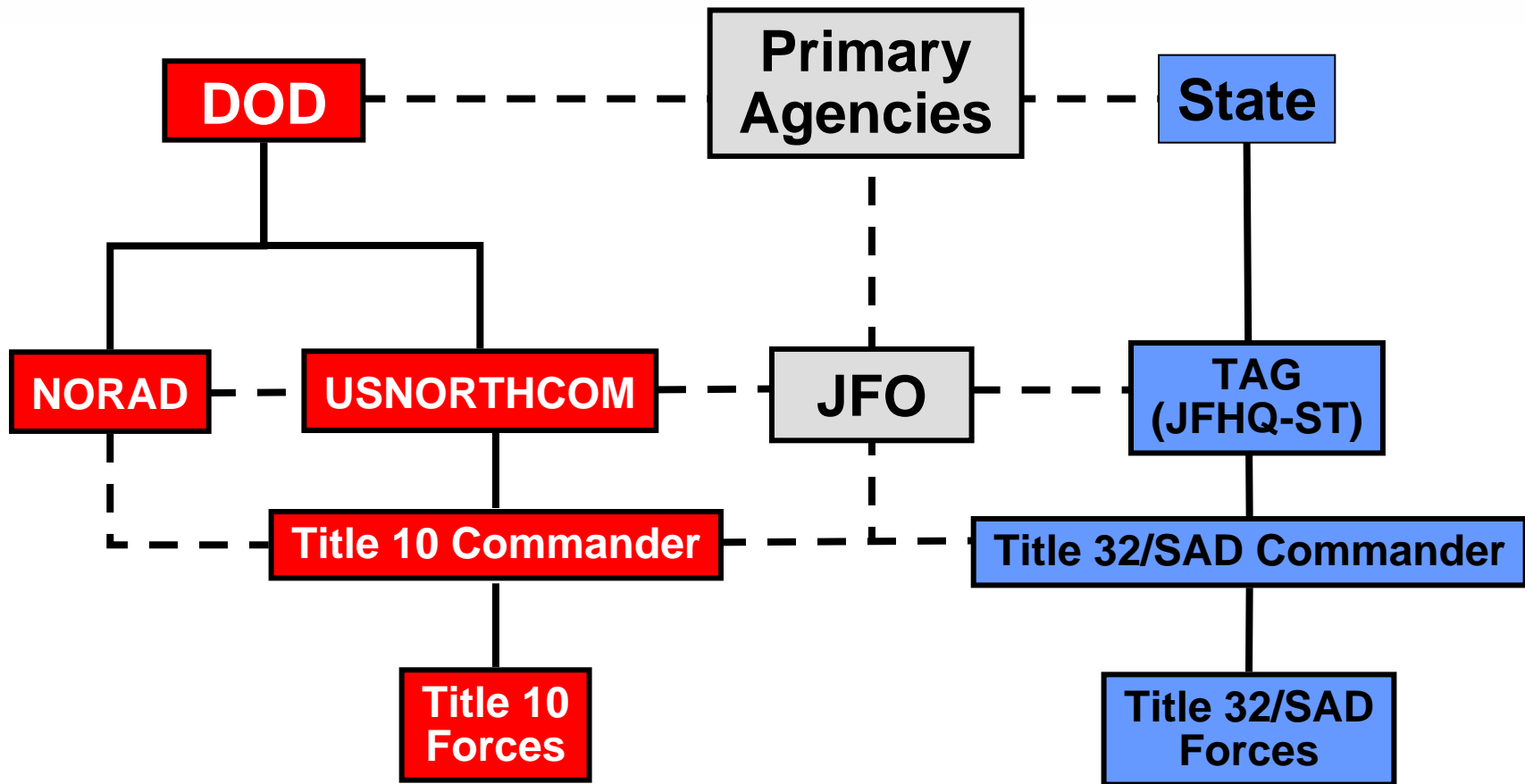


Military Command and Control Options

- **Parallel Command**
 - Title 32 (National Guard) and Title 10 (Active Duty) Forces with **separate commanders** working in a **coordinated relationship** in support of local, state and Federal Civil Authorities
- **Dual Status Command**
 - National Guard and Active Duty Forces **under a single Commander** in support of State and Federal Civil Authorities

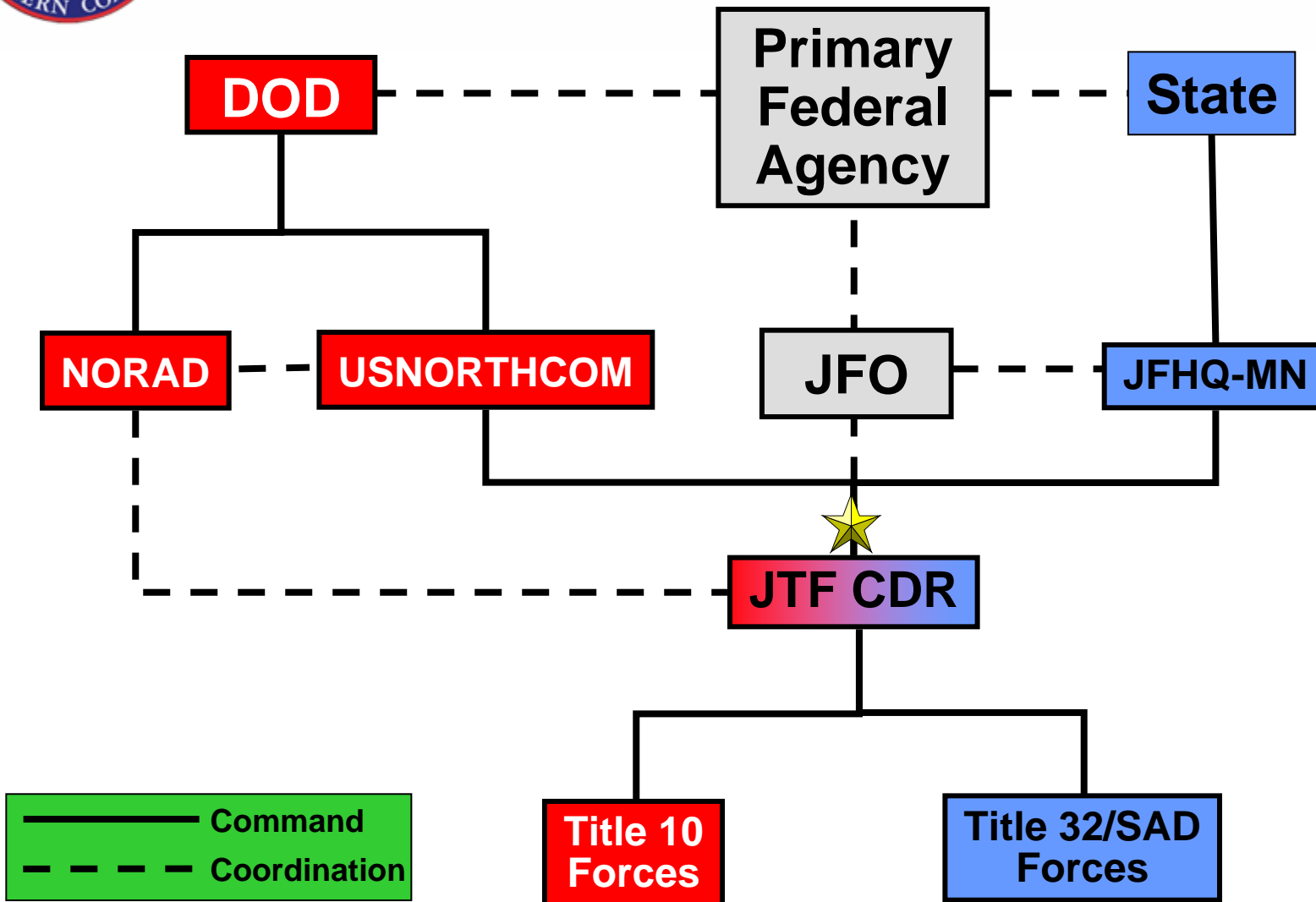


Parallel Command Model





Dual Status JTF Commander Model





USNORTHCOM Previously Supported NSSEs

- **2004**
 - President's 2004 State of the Union Address (SOTUA)
 - Republican National Convention
 - State Funeral, Former President Ronald Reagan
 - G-8 Economic Summit
 - Democratic National Convention
- **2005**
 - 2005 Presidential Inaugural
 - President's 2005 State of the Union Address (SOTUA)
- **2006**
 - President's 2006 State of the Union Address (SOTUA)
 - State Funeral, Former President Gerald Ford
- **2007**
 - President's 2007 State of the Union Address (SOTUA)
- **2008**
 - President's 2005 State of the Union Address (SOTUA)



UNCLASSIFIED

Future NSSEs

- **2008**
 - 2008 Democratic National Convention
 - 2008 Republican National Convention
- **2008**
 - 2009 Presidential inaugural
 - President's 2009 State of the Union Address

UNCLASSIFIED



UNCLASSIFIED

Conclusion

- **NSSEs are designated**
- **Local, State, Tribal, Federal and Private coordination is required to make the NSSE successful**
- **NSSEs are planned events---pre-planning is key to developing requirements and execution**
 - **Local, State, Federal Committee Meetings**
 - **Other Meetings (Military, Interagency, etc)**
 - **Exercises, TTXs, Terrain Walks, Rock Drills, COMMEX**
 - **Briefings and Backbriefs**

UNCLASSIFIED



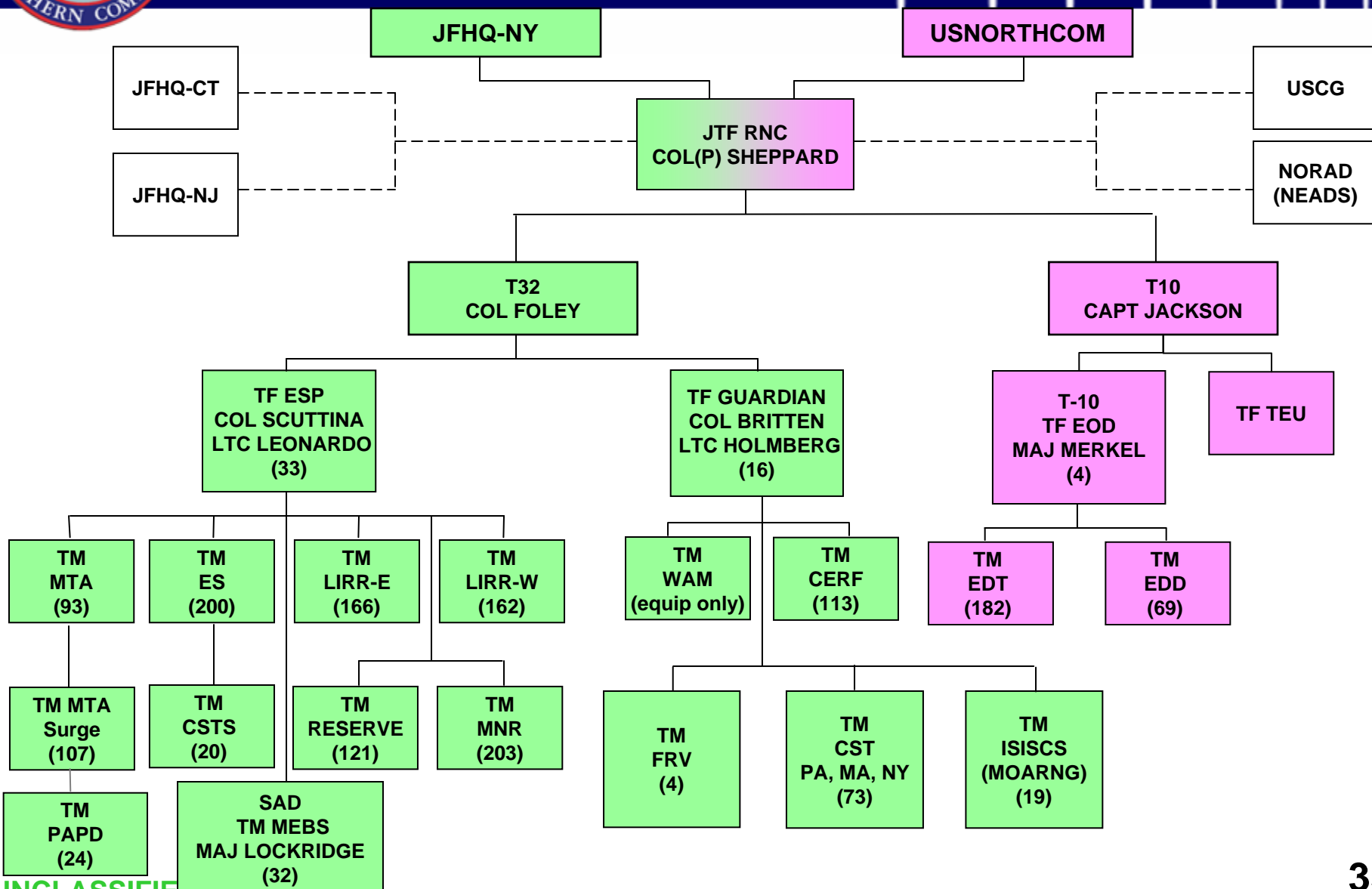
QUESTIONS



Backup Slides

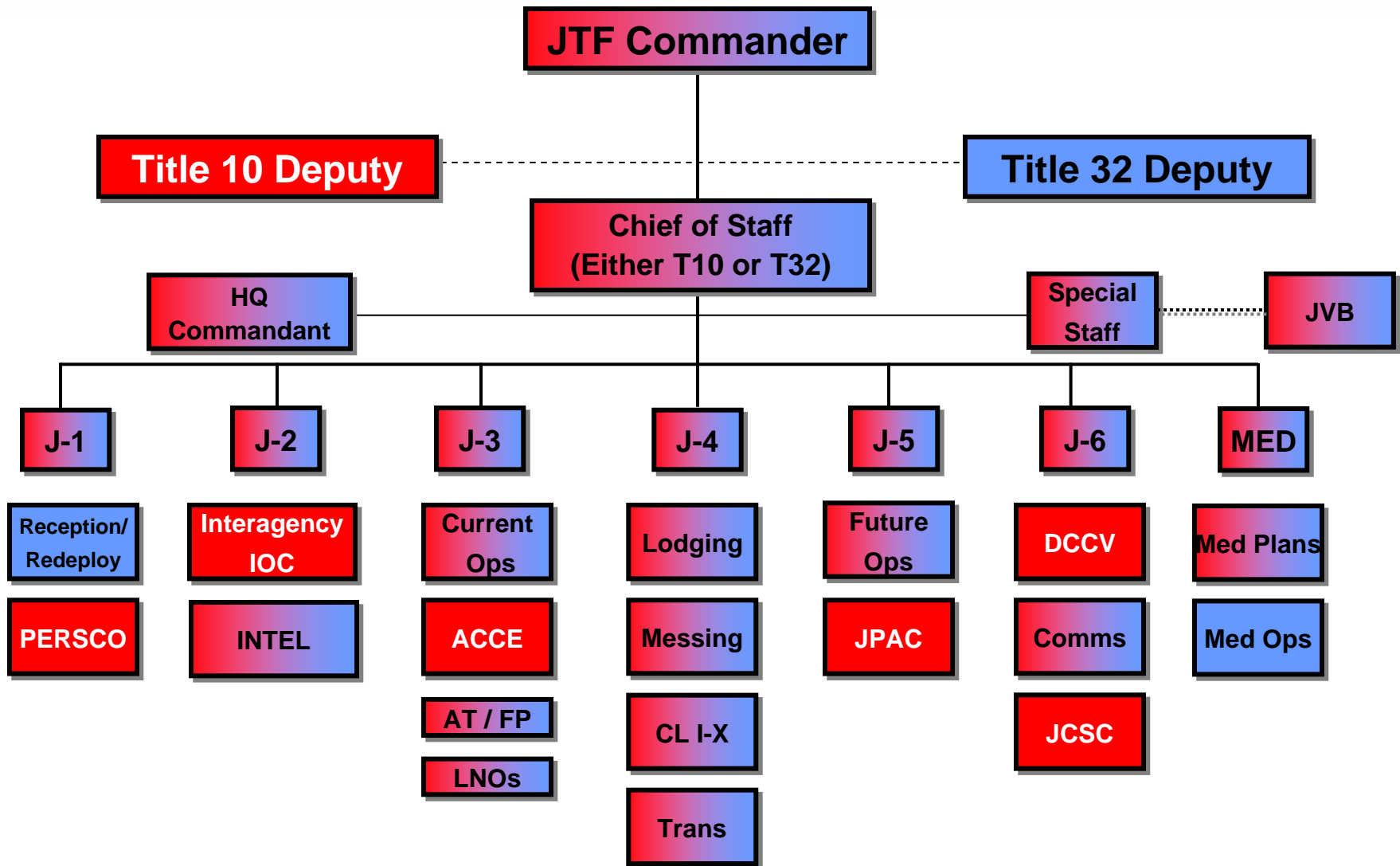


JTF-RNC Task Force Organization





Example Dual Status Staff Sections





MACC Information

- The MACC is the primary center for all **operational security (vs. operational)** matters for the NSSE (Federal)
- The mission of the MACC was to receive, process and disseminate all communications pertaining to operational security concerns for the NSSE
- 50-80 agencies supported will be represented in the JFO:

- | | | |
|-------|---------|----------------------|
| -USSS | -HHS | -FEMA |
| -DoD | -NG | -USM |
| -FDA | -DHS | -ICE |
| -CDC | -TSA | -USPI |
| -FCC | -EPA | -WHMO |
| -FBI | -HAZMAT | -State EMA |
| -USCG | -FAA | -US & State Attorney |

-Numerous other Local, County and State agencies



Special Event Assessment Rating (SEAR)



- SEAR-I: Events of significant national and/or international importance that may require extensive Federal interagency security and incident management preparedness. Pre-deployment of Federal assets as well as consultation, technical advice and support to specific functional areas in which the state and local agencies may lack expertise or key resources may also be warranted. In order to ensure unified Federal support to and appropriate national situational awareness, a Federal Coordinator (FC) will be designated, and an Integrated Federal Support Plan (IFSP) (Matrix of responsibilities for all agencies involved) will be developed.



Special Event Assessment Rating (SEAR)



- SEAR II: Significant events with national and/or international importance that may require direct national-level *Federal support and situational awareness*. The magnitude and significance of these events calls for close coordination between Federal, state, and local authorities and may warrant limited pre-deployment of USG assets as well as consultation, technical advice and support to specific functional areas in which the state and local agencies may lack expertise or key resources. In order to ensure unified Federal support to the local authorities and appropriate national situational awareness, a Federal Coordinator (FC) will be designated and an Integrated Federal Support Plan (IFSP) will be developed.



Special Event Assessment Rating (SEAR)



- SEAR-III: Events of national and/or international importance that require only limited direct Federal support to augment local capabilities. Generally, state and local authorities adequately support these events; however, the significance of these events generally warrants national situational awareness and, depending on the jurisdiction, may require limited direct support from specific Federal agencies. In order to ensure appropriate national situational awareness, an Integrated Federal Support Plan (IFSP) may be developed.



Special Event Assessment Rating (SEAR)



- SEAR-IV: Events with limited national importance that are generally handled at the state and local level. Unusual circumstances may sometimes necessitate the employment of specific Federal resources to address unique needs of a particular event. Existing Federal assistance programs are available to state and local jurisdictions hosting the event for training, exercise, and/or tailored program support.



Special Event Assessment Rating (SEAR)



- SEAR-V: Events that may be nationally recognized but generally have local or state importance. Federal departments and agencies will receive notice of these events for situational awareness purposes, but in most cases minimal, if any, Federal assets or resources will be expended to assist with management of these events. Federal officials will not normally actively monitor or coordinate support for these events unless specifically requested.